



MONTHLY MEMBERSHIP PROGRESS REPORT

Results as of: 7/31/2015

Multiple District 2

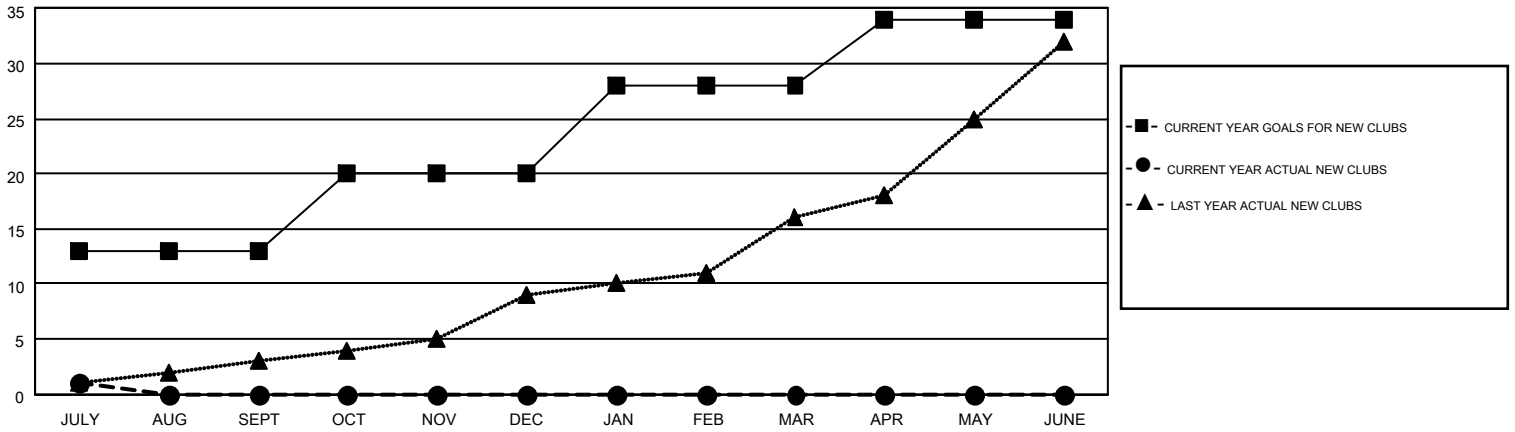
LOCATION: TEXAS

GMT: HAL GRIFFIN

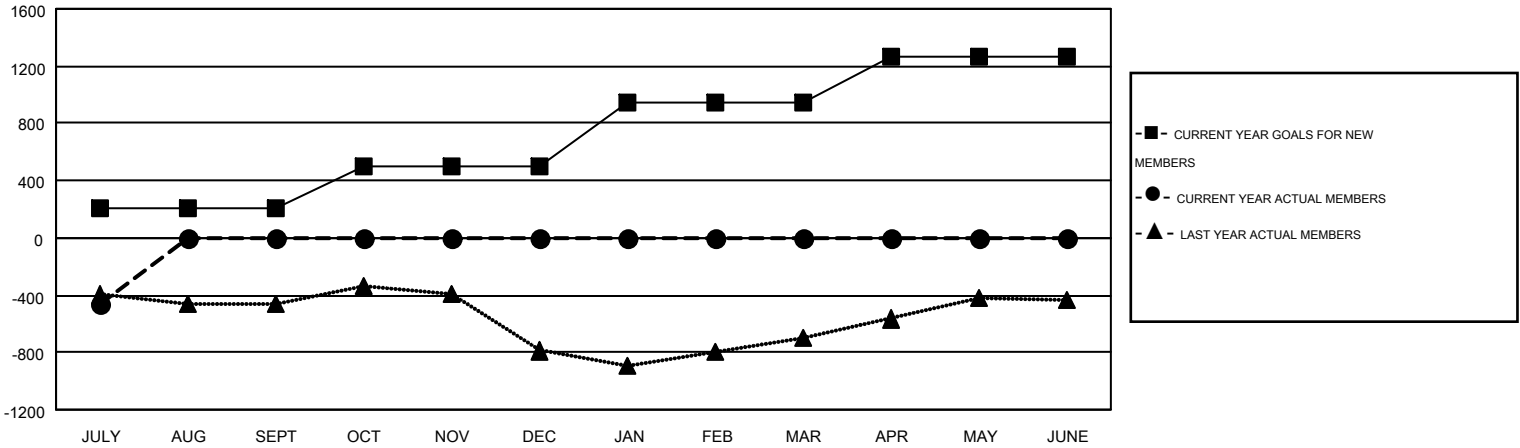
GMT CA 1

Clubs					Members				
RESULTS FOR 2015-2016					RESULTS FOR 2015-2016				
QUARTER	NEW CLUB GOAL	NEW CLUBS	DROPPED CLUBS	NET GAIN/LOSS	QUARTER	NEW MEMBER GOAL	CHARTER AND NEW MEMBERS ADDED	DROPPED MEMBERS	NET GAIN/LOSS
JULY/AUG/SEPT	13	1	1	0	JULY/AUG/SEPT	212	286	749	-463
OCT/NOV/DEC	7	0	0	0	OCT/NOV/DEC	289	0	0	0
JAN/FEB/MAR	8	0	0	0	JAN/FEB/MAR	441	0	0	0
APR/MAY/JUNE	6	0	0	0	APR/MAY/JUNE	325	0	0	0

GOALS AND ACTUAL NEW CLUBS CUMULATIVE



GOALS AND ACTUAL MEMBERS CUMULATIVE



DROPPED CLUBS: 1	155 CLUBS OF 896 ADDED 1 OR MORE NEW MEMBERS	<u>GENDER DISTRIBUTION</u>			
<u>DROPPED MEMBERS</u>		MALE	17,385 (67.17%)		
DECEASED	41	FEMALE	8,498 (32.83%)		
CLUB CANCELLED	0	CLICK HERE FOR HEALTH ASSESSMENT DATA			
OTHER	708			FAMILY UNIT MEMBERS	3,872
TOTAL	749			HEAD OF HOUSEHOLD	1,897
		NON-HEAD OF HOUSEHOLD	1,975		